

SHOW YOUR MIND

ENJOYING
EXHIBITIONS DESIGN

TOCS

DESIGNERBOOKS



Limited Edition Booth – LE Booth

Design Agency: LABSCAPE

Designer: Robert Ivanov & Tecla Tangorra

Project Location: Kortrijk, Belgium

Photographer: Nicolas Schimp

The concept of the Limited Edition booth was based on the circular agriculture fields that are tangents to each other. The carpet are cut in a circular shape with different radius and are positioned the same way as the circular fields creating small islands where several functions can be hosted. The colors of the carpet are following a gradient from dark to warm colors.

The walls of the exhibition space are backlit where the black panels are laser cut creating gradient pattern made from circular shape. This gradient is making a constant changing space ambient.

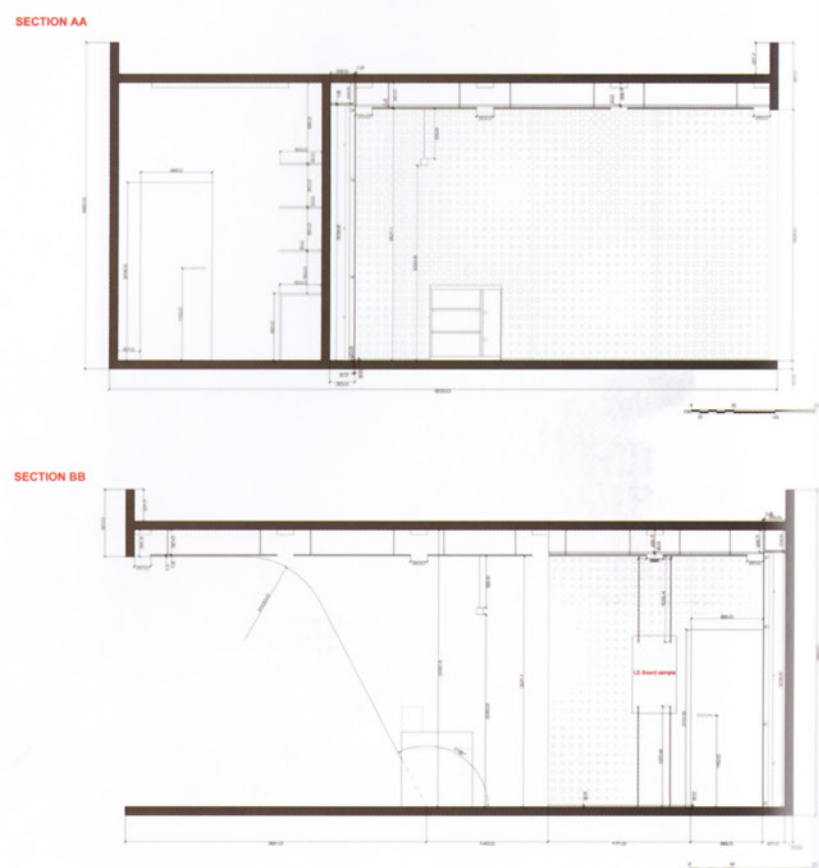
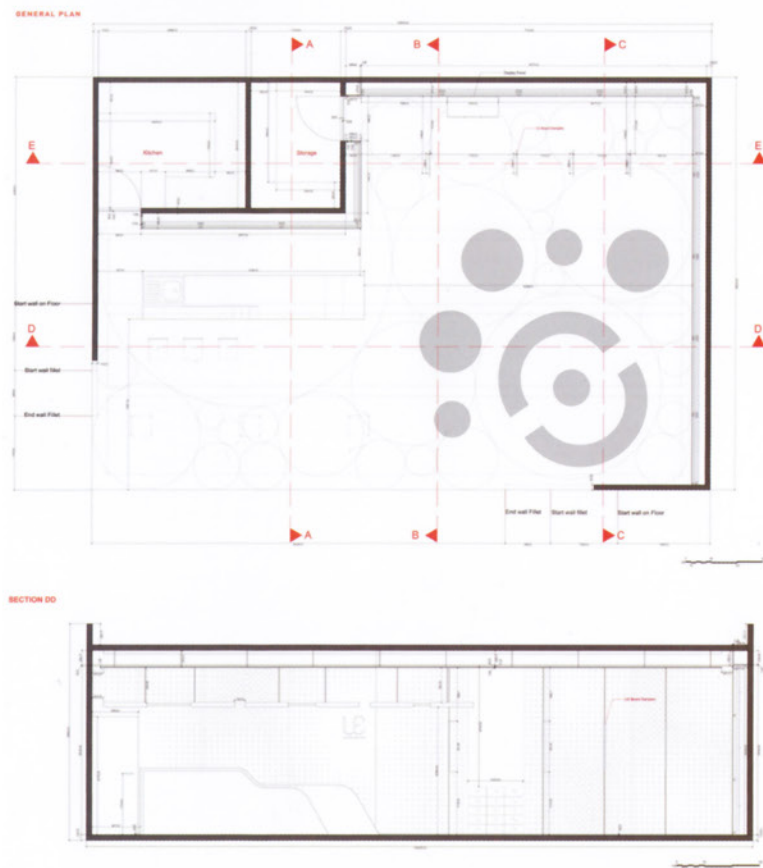
The ceiling is the reflection of the floor outlined in black and white.

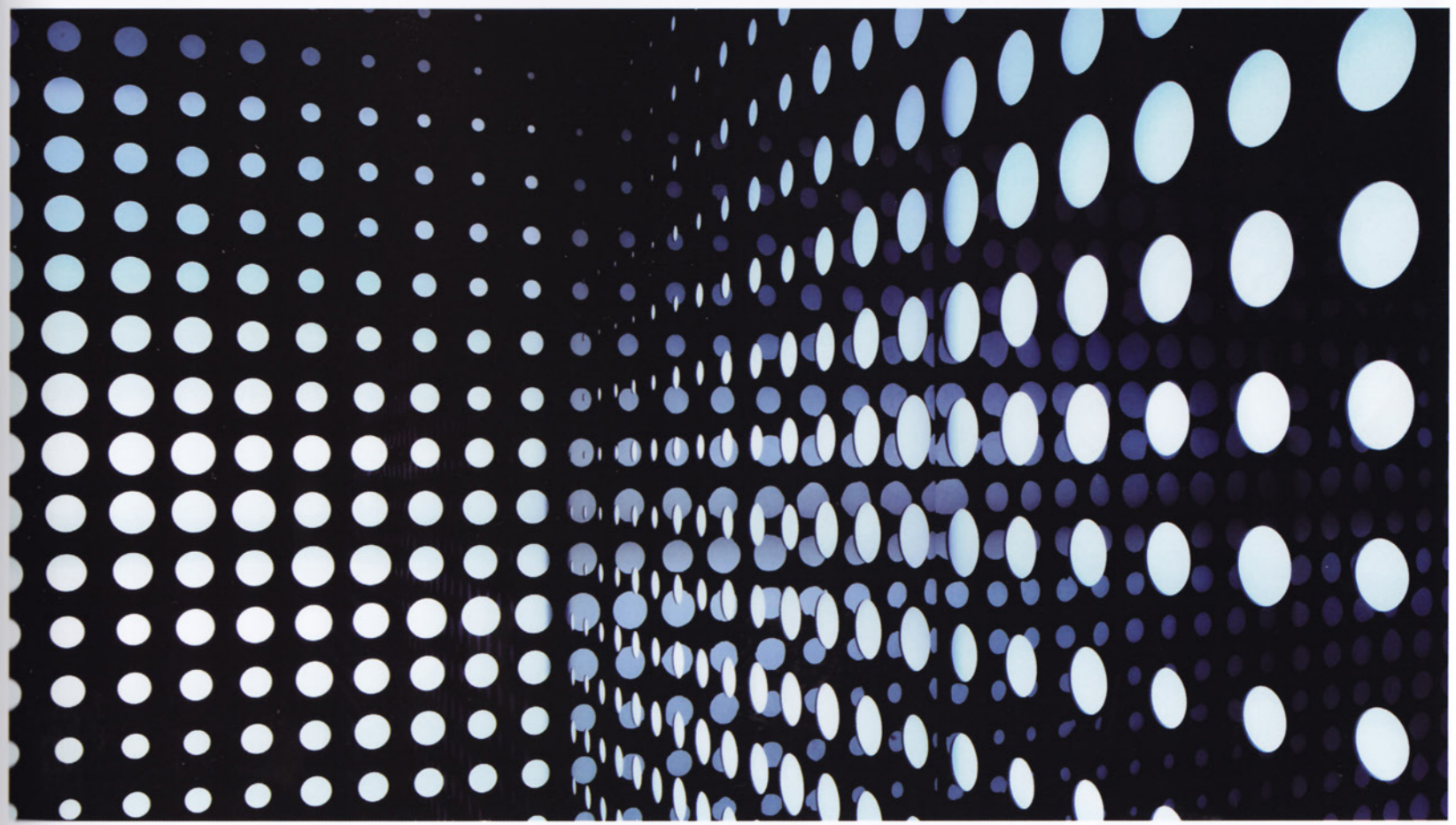
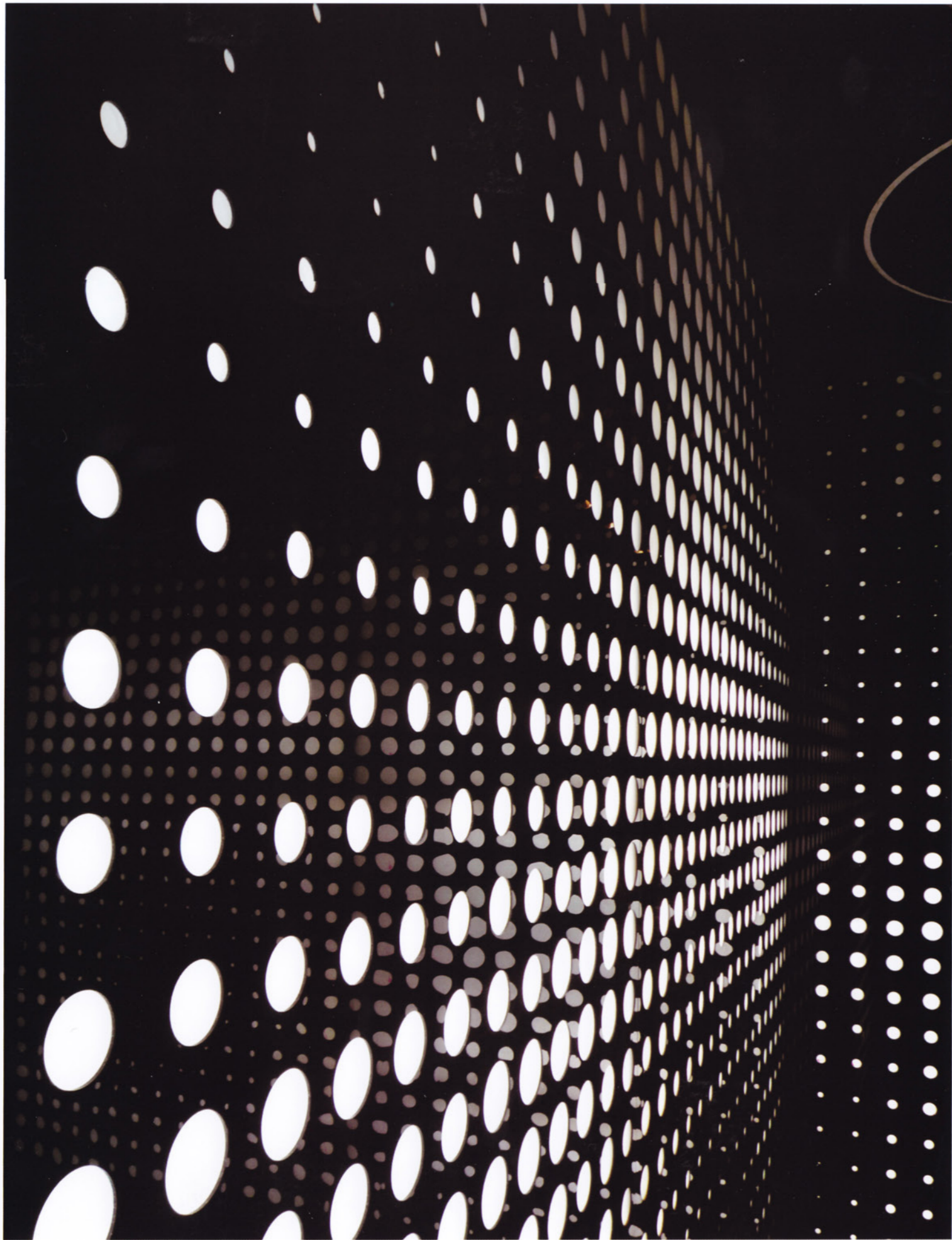
The space proposes different areas; bar area where

people stand up and can drink and socialize, lounge area where people can sit, samples area where the products can be seen and touched.

The furnitures are following the circular shape creating intersections of social communications made by their positioning.







2Tec2 Booth

Design Agency: Labscape

Designer: Robert Ivanov & Tecla Tangorra

Project Location: Kortrijk, Belgium

Photographer: Nicolas Schimp

The beginning of the project was based on the gills of the manta ray. How is it divide himself from one surface to make progressive openings? The complete geometry is triangulated to make more architectonic effects.

The space is created by 40 stripes of 25cm width,

where each one deform, twist, reduces width, pull up and down for making the functions of presentation, communication, sitting, storage, as well as placing table, desk, and lights openings. All the stripes are following a general geometry of 3 sinusoidal lines that are evolving in the

space. These direction lines are making the overall space more structured.

These stripes are covered with carpet in one side when the other side is painted in black, which allow people to see almost the complete collection of 2TEC2.

