

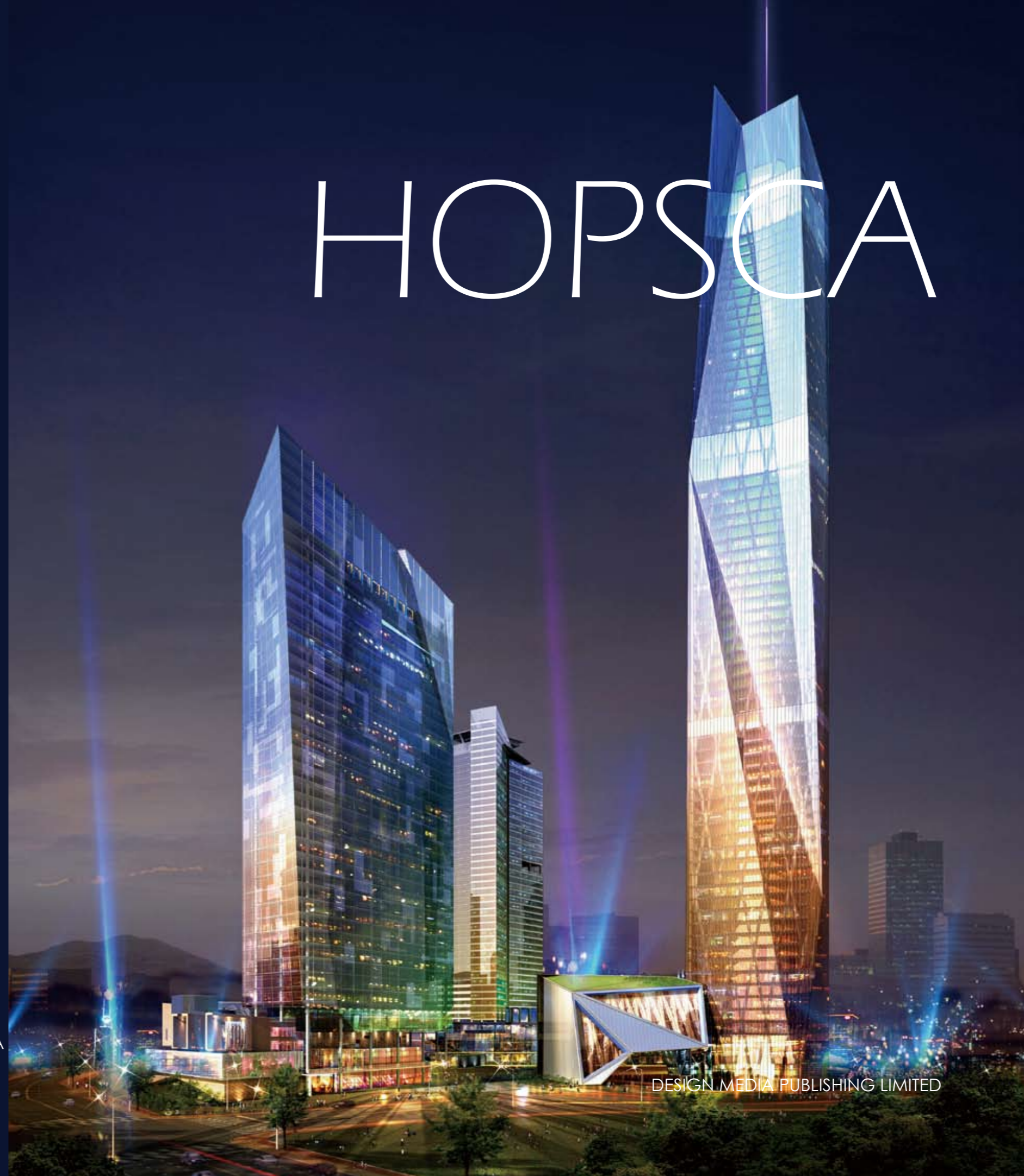
HOPSCA

HOPSCA



DESIGN MEDIA
PUBLISHING
LIMITED

DESIGN MEDIA PUBLISHING LIMITED



HOPSCA

Contents

6	Shanghai ICC	114	Dubai Mixed-Use Towers	216	Y3+1
14	Asan Baebang Mixed-Use Project	120	Z Towers	222	Greenside Out
20	Wilson Town City Centre	126	Chua Boc Mixed-Use Development	228	Asan Baebang Mixed-use Complex
26	Cumulus	132	Wind Towers	236	Changchun 1948
36	International Business Centre Zhi Yuan	136	Republic Square	242	L.A.R.S.
42	Urban Oasis	142	Business Centre Miramare	246	FENIX
48	XERO Project	146	Istanbul Seaport	252	Campus Centre
54	Draga-Šibenik	150	Izmir Bayrakli	262	COR
60	Portal to Gijón	154	Al Dana at Al Raha Beach	270	Indx
66	Magma Towers	160	Headquarters LBBW Immobilien		
72	Puerta del Sol Towers	164	Bionic Tower		
76	Arnhem Central Transfer hall	170	The Rebuilding		
82	Scala Tower	180	Raffles City Hangzhou		
86	Sky Village	192	The Circle at Zurich Airport		
94	Urban Resort Saint Petersburg	198	Sustainable Multifunctional Building with Commerce and Housing		
102	Ozdilek Plaza	204	All Seasons Tent Tower		
108	Life in Town	210	Medina Towers		

Medina Towers



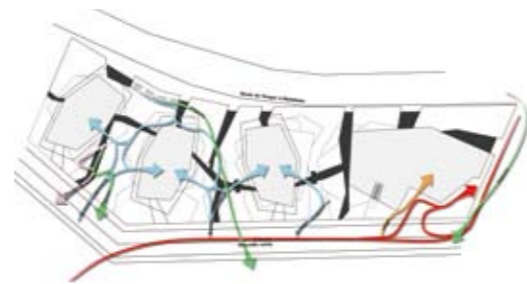
Functional area

Hotel (5 stars): 300 Rooms Convention center Spa
Swimming pools Bars Restaurants Club Casino Parking
General Services 200 Luxury Apartments from 2 to 5
bedrooms Offices Green roofs Commercial centre
Retail shop Green areas

Location: Tangier, Morocco **Designers:** LABSCAPE
Architecture **Photographer:** LABSCAPE Architecture
Competition date: 2007 **Completion date:** 2014
Competition name: International Completion of
Medina Towers **Construction area:** 117,000 sqm **Place in
the Competition:** first Prize

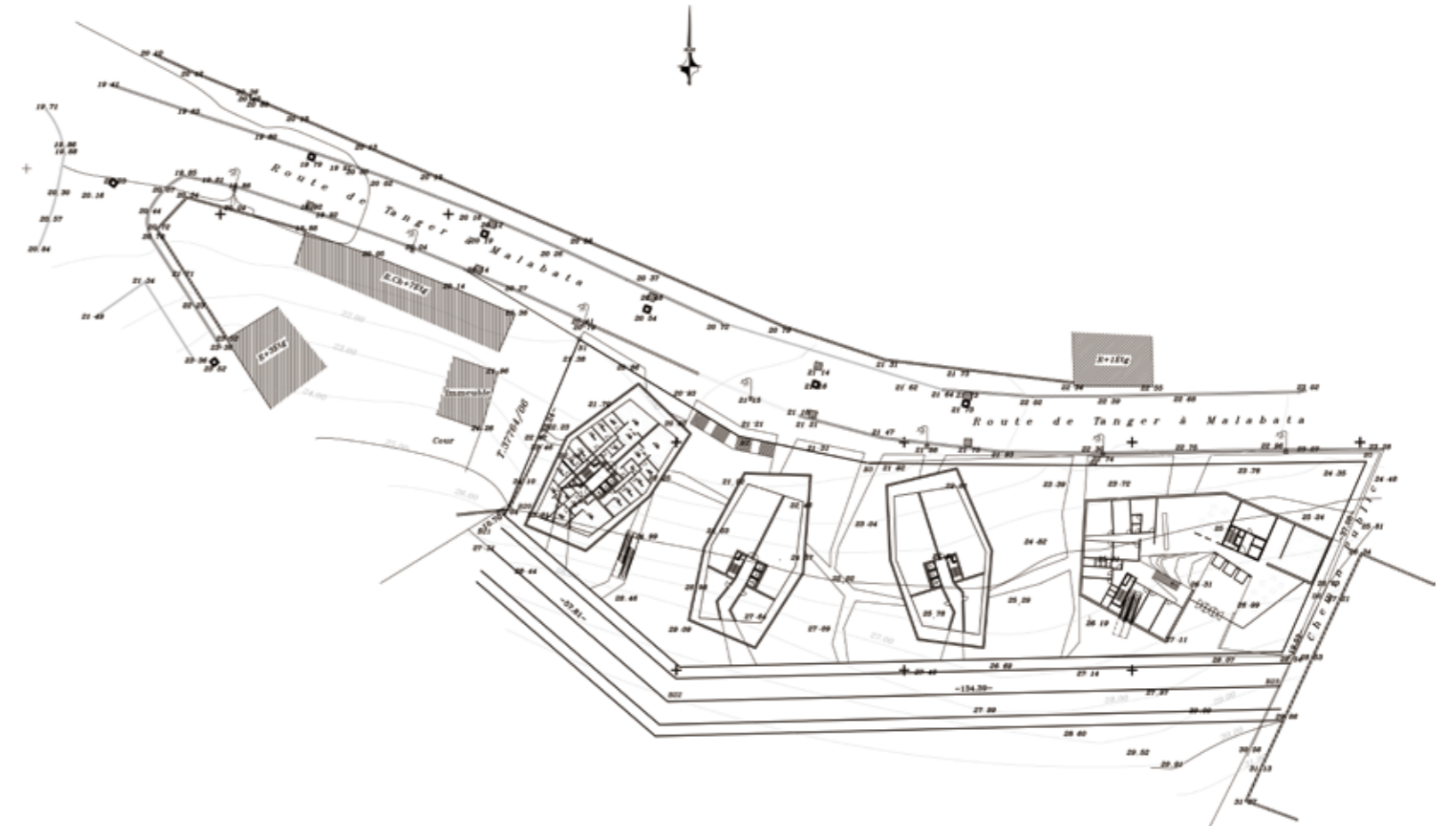
Awarded reason:

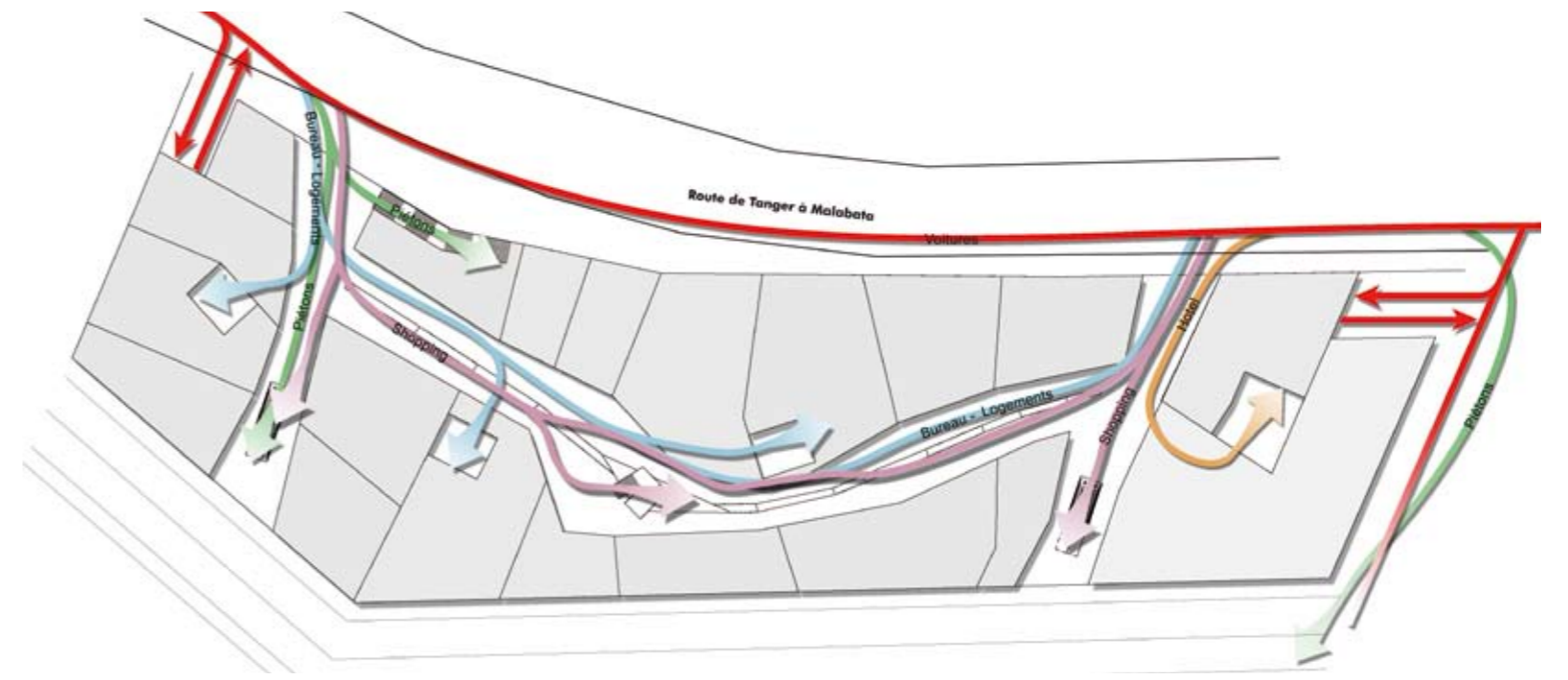
The initial idea is typical of Moroccan culture
and based on 4 basic elements in the Moroccan
landscape.



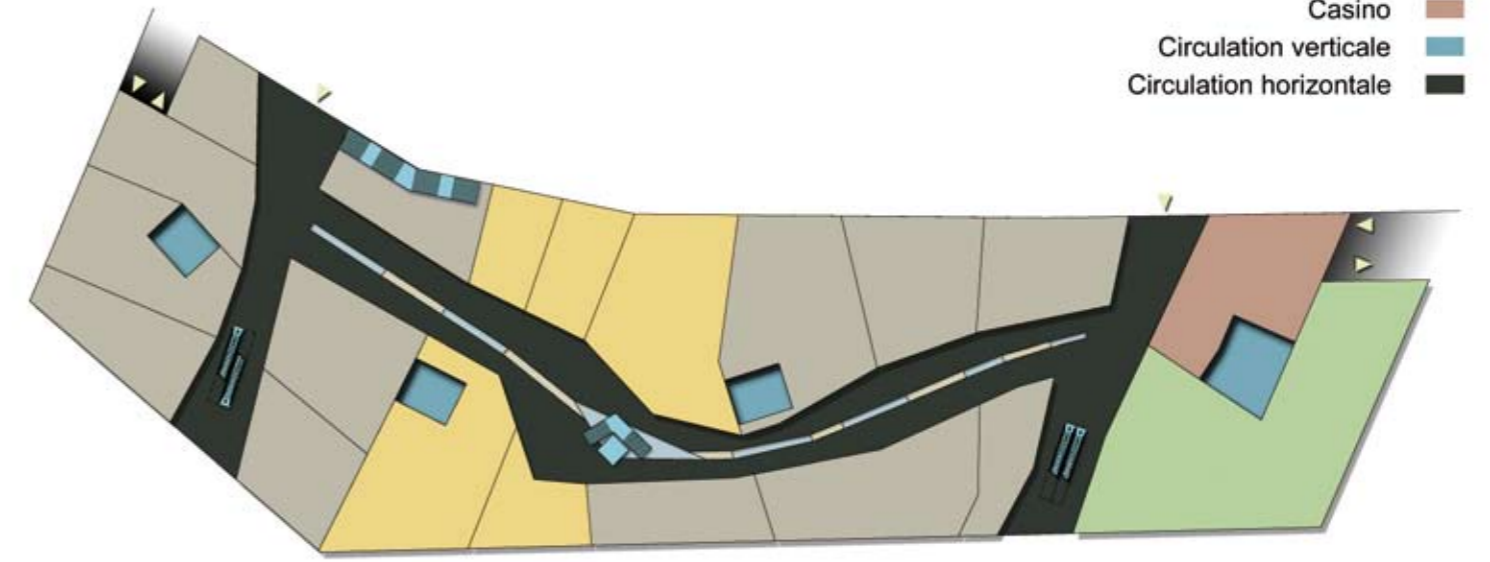
The first tower, the hotel, takes as a reference
point something unique in the Arabic world, the
moucharabie, a kind of wood carving bema.
This device, which allows one to observe without
being seen, is generally made from small pieces
of turned wood assembled according to an
often-complex geometrical plan, forming a
closely woven grille. All the buildings rest on a
horizontally "cut out" base, like the dry cracked
ground. The rifts allow light to pass through and
protect visitors from heat. The idea recreates a
place similar to the traditional Medina, but in
a contemporary and innovative version. The 3
residential towers are positioned close together,
creating a play of perspective from oblique lines,
solids and voids, just like superimposed stones.



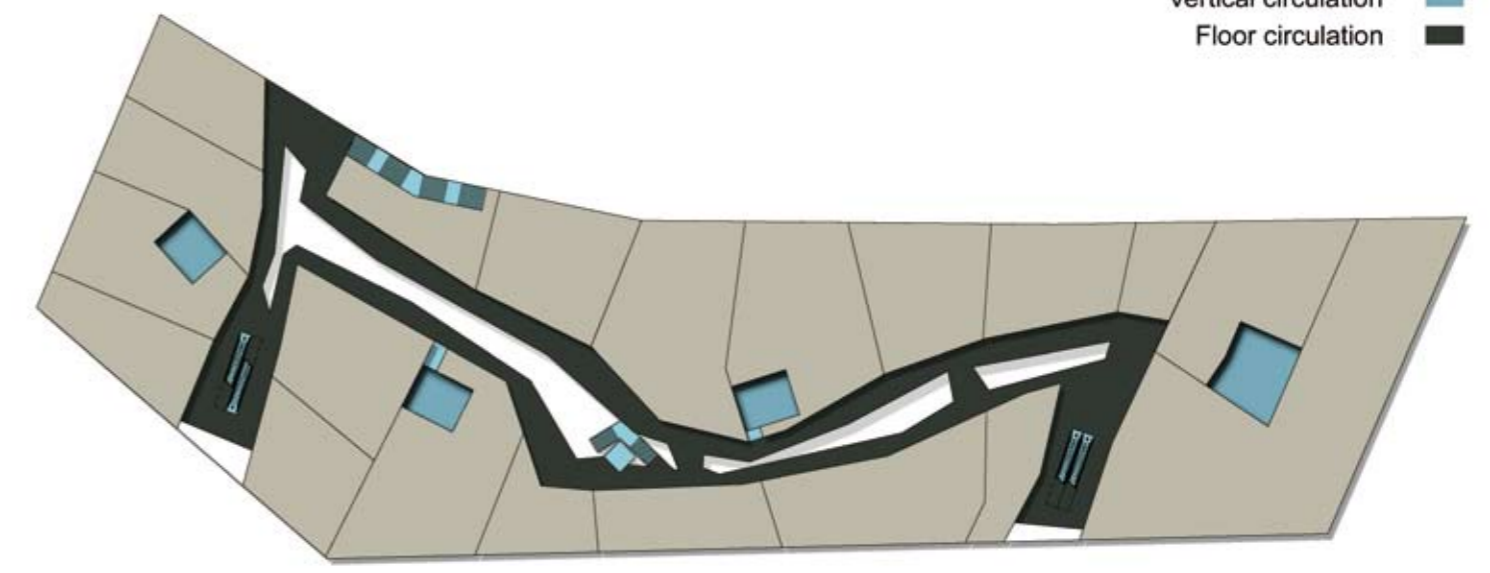




- Casino ■
- Circulation verticale ■
- Circulation horizontale ■



- Vertical circulation ■
- Floor circulation ■



Index

- 1. SMAQ**
T +49 30 6920 8634
F +49 30 2219 7215
- 2. UN STUDIO**
T +31 20 570 20 40
F +31 20 570 20 41
- 3. GIR architectios**
T +52 81 8338 0340
F +52 81 8338 0340
- 4. ice-architects**
T +44 20 3215 0015
F +44 20 3215 0017
- 5. 5 plusd esign**
T +86 21 6103 6825
F +86 21 6103 6868
- 6. OA+D Architects**
T +345 945 2979
F +345 945 1653
- 7. drd-studio**
T +213 382 4118
- 8. milieuarchitects**
T +44 207 4902 943
- 9. Henn**
T +49 89 52357-0
F +49 89 52357-123
- 10. David Baker + Partners**
T +415 896 6700
F +415 896 6103
- 11. Kincl Ltd**
T +385 1 45 61 262
F +385 1 48 26 326
- 12. Bjarke Ingels**
T +45 72 21 72 27
- 13. MVRDV**
T +31 10 477 28 60
F +31 10 477 36 27
- 14. Willy Müller Architects**
T +34 93 319 50 82
F +34 93 319 86 34
- 15. ABSTRAKT Studio**
T +416 830-3160
F +416 484-6495
- 16. MANUELLE GAUTRAND ARCHITECTURE**
T +33 156 950 646
F +33 156 950 647
- 17. Fentress Architects**
T +303 722 5000
- 18. Piuarch**
T +39 0289096130
F +39 02875506
- 19. Eric Owen Moss**
T +310 839-1199
F +310 839-7922
- 20. 3LHD**
T +385 1 2320200
F +385 1 2320100
- 21. KSV Krüger**
T +49 30 28 30 31-0
F +49 30 28 30 31-10
- 22. NRJA**
T +61 2 92801475
F ++61 2 92818125
- 23. REX**
T +1 646 230 6557
F +1 646 230 6558
- 24. Riken Yamamoto**
T +45 226 2460
F +45 226 3462
- 25. LOOS ARCHITECTS**
T +31 20 3300128
F +31 20 6207600
- 26. OFIS Arhitekti**
T +386 1 4260084
F +386 1 4260085
- 27. Labscape**
T +1 212 695 1277
F +1 212 695 6511
- 28. Joubert Architecture**
T +31 10 4131011
- 29. Destefanoand partners**
T +312 836 4321
F +312 836 4322
- 30. logon-architecture**
T +86 21 62 71 32 07
F +86 21 62 71 54 79
- 31. Shin Takamatsu**
T +81 75 621 6002
F +81 75 621 6079
- 32. Benoy**
T +97 1 2 403 9444